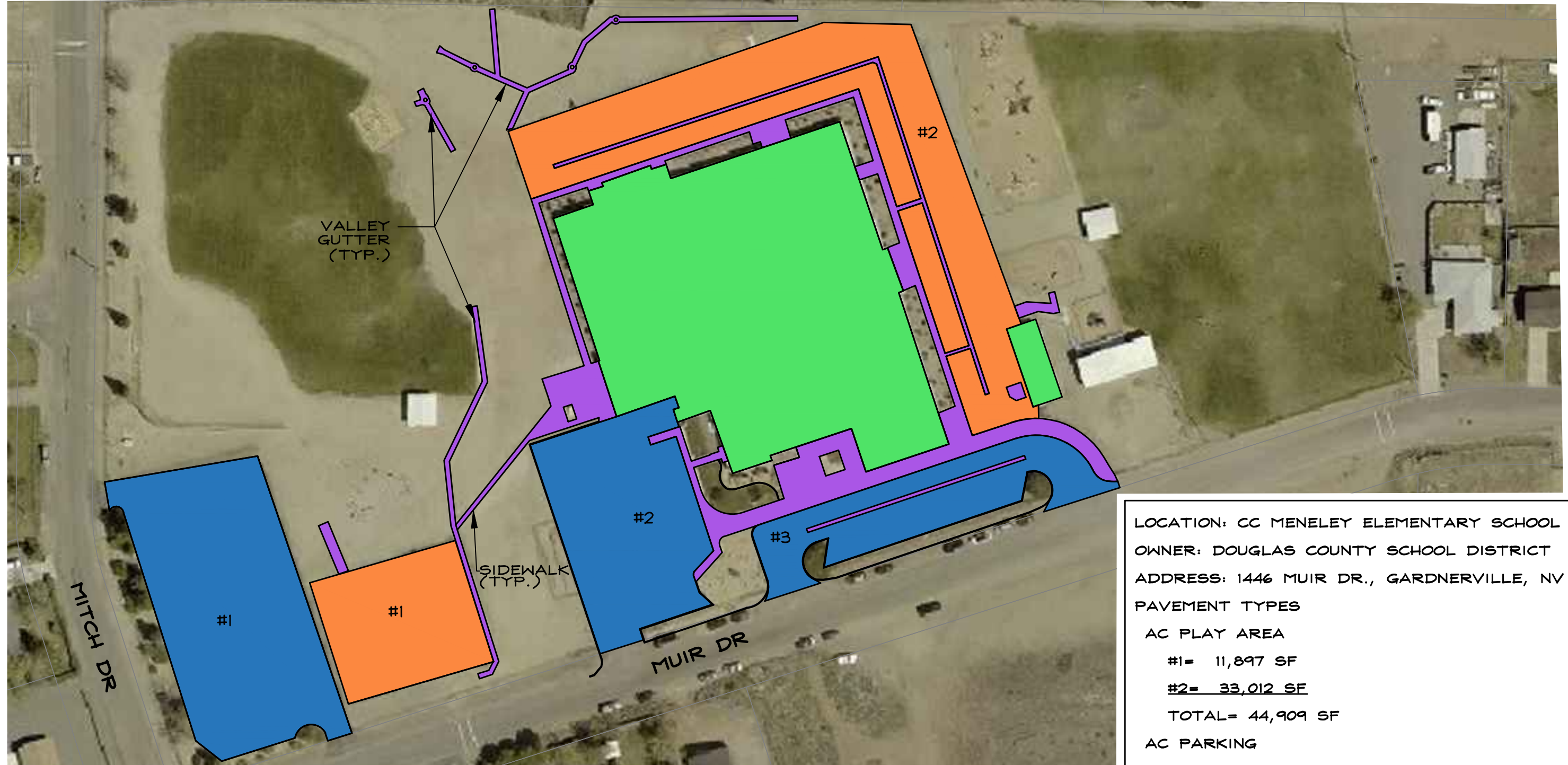


Y:\Client\_Files\0005\0005-133\CAD\Engineering\Exhibits\CC MENELEY ELM.dwg 1/23/2019 2:08:17 PM Rina Kampy



**DOUGLAS COUNTY SCHOOL DISTRICT  
PAVEMENT INVENTORY  
JANUARY 2018**

0005-133

01/23/19

**R/O Anderson**  
WWW.ROANDERSON.COM

MINDEN  
1603 Esmeralda Ave  
P.O. Box 2229  
Minden, NV 89423  
p 775.782.2322  
f 775.782.7084

RENO  
140 W. Huffaker Lane  
Suite 507  
Reno, NV 89511  
p 775.782.2322  
f 775.782.7084



**LEGEND**

- AC PLAY AREA
- AC PARKING
- CONCRETE
- BUILDING

LOCATION: CC MENELEY ELEMENTARY SCHOOL  
OWNER: DOUGLAS COUNTY SCHOOL DISTRICT  
ADDRESS: 1446 MUIR DR., GARDNERVILLE, NV

**PAVEMENT TYPES**

**AC PLAY AREA**

#1= 11,897 SF  
#2= 33,012 SF  
TOTAL= 44,909 SF

**AC PARKING**

#1= 26,619 SF  
#2= 17,814 SF  
#3= 12,773 SF  
TOTAL= 57,206 SF

CONCRETE: 22,326 SF

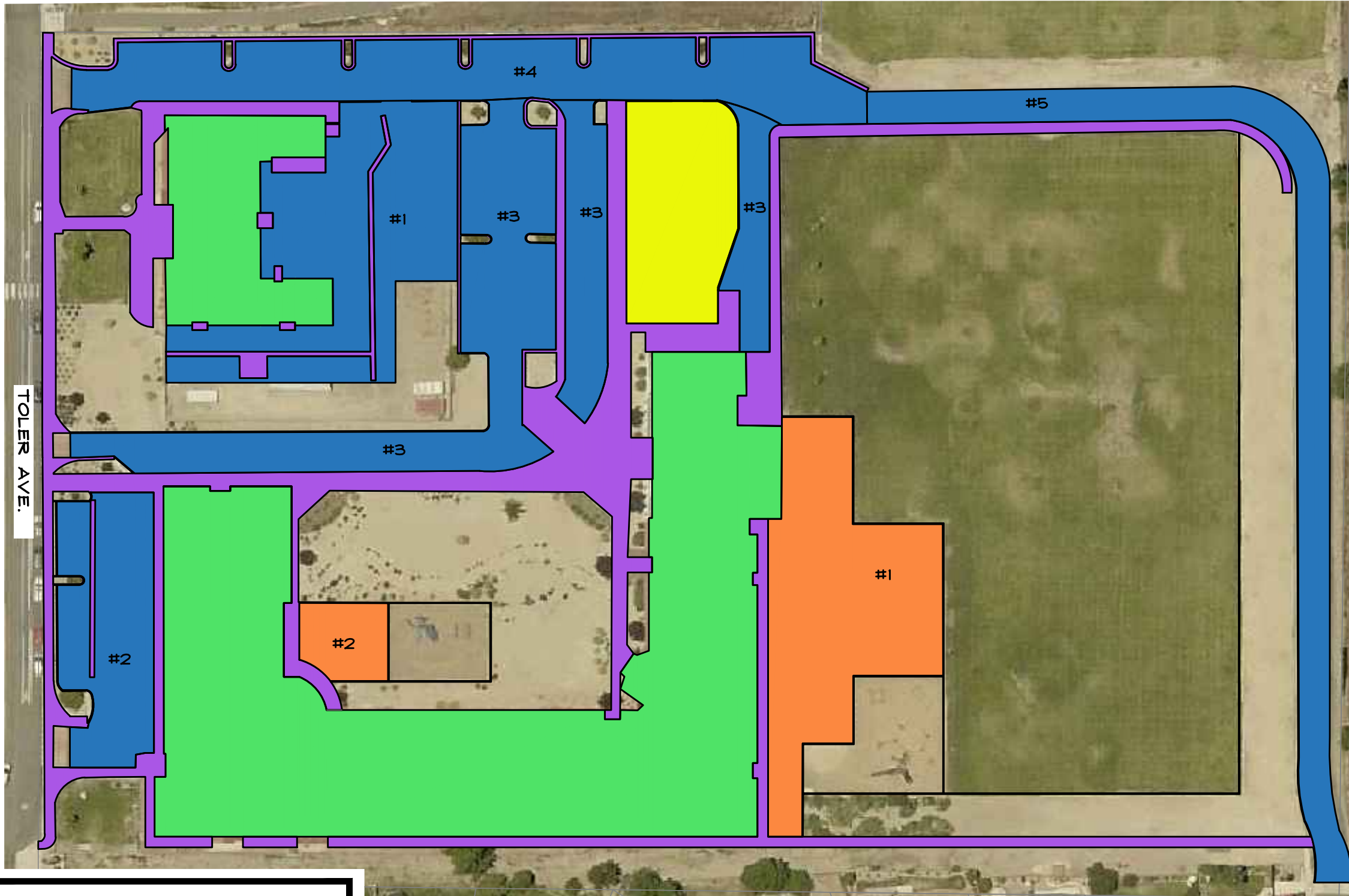
PARKING SPACES

STANDARD: 77

ADA: 4

SCALE: 1" = 80'

Y:\Client\_Files\0005\0005-133\CAD\Engineering\Exhibits\Completed\_Schools\GES SCHOOL.dwg 2/26/2019 9:58:14 AM Rina Kompy



SCALE: 1" = 75'

LOCATION:  
GARDNERVILLE ELEMENTARY SCHOOL  
OWNER:  
DOUGLAS COUNTY SCHOOL DISTRICT  
ADDRESS:  
1290 TOLER AVE., GARDNERVILLE, NV

PAVEMENT TYPES:  
CONCRETE: 44,356 SF

AC PARKING  
#1=18,228 SF  
#2=10,165 SF  
#3=26,912 SF  
#4=19,706 SF  
#5=16,489 SF  
TOTAL=91,500 SF

AC PLAY AREA  
#1=18,338 SF  
#2=2,770 SF  
TOTAL=21,108 SF

AC GRINDINGS: 9,908 SF

PARKING SPACES  
STANDARD: 106  
ADA: 6

**DOUGLAS COUNTY SCHOOL DISTRICT  
PAVEMENT INVENTORY  
FEBRUARY 2019**

0005-133 2/26/19

**R/O Anderson**  
WWW.ROANDERSON.COM

MINDEN 1603 Esmeralda Ave  
P.O. Box 2229  
Minden, NV 89423  
p 775.782.2322  
f 775.782.7084

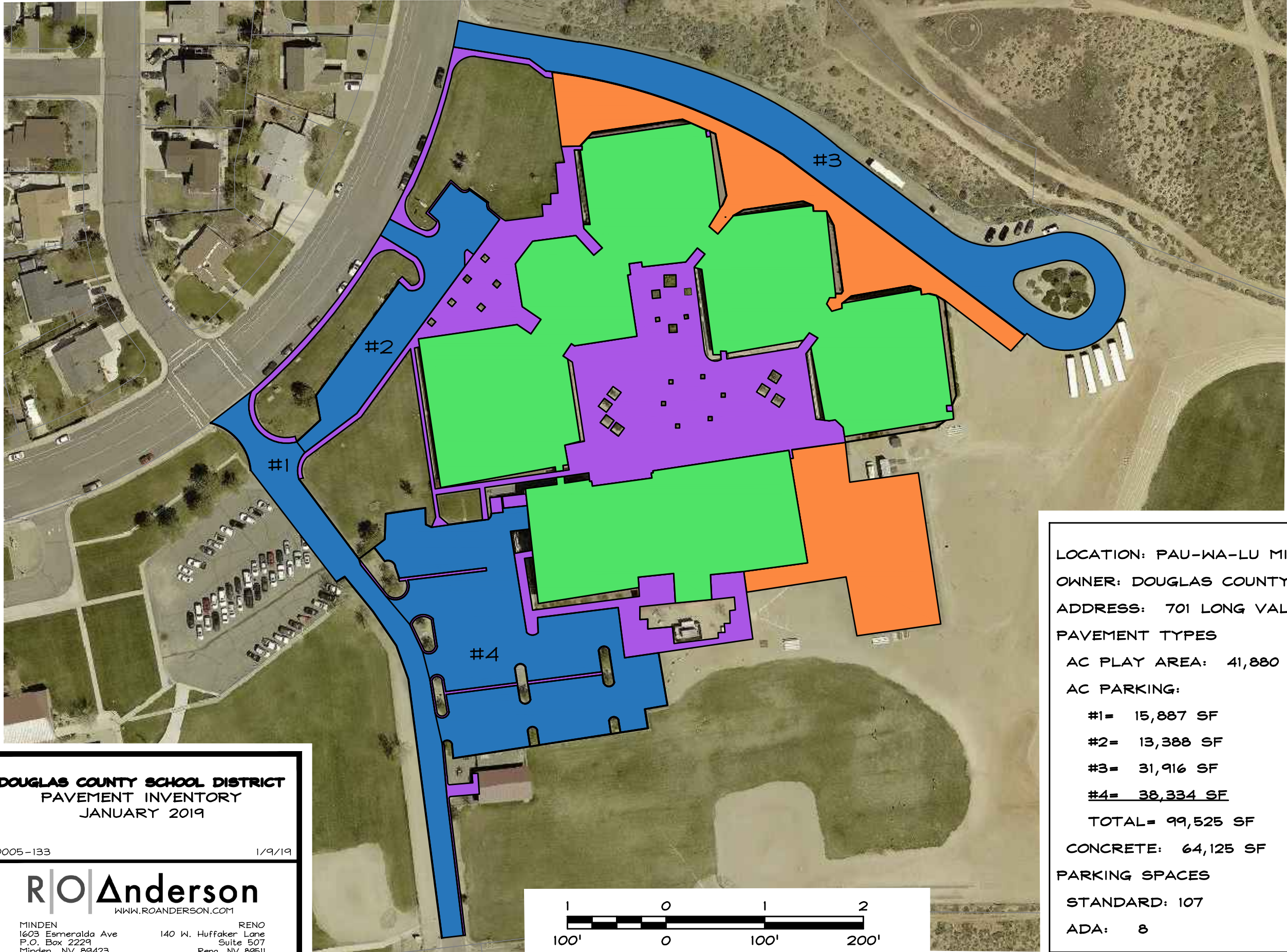
RENO 140 W. Huffaker Lane  
Suite 507  
Reno, NV 89511  
p 775.782.2322  
f 775.782.7084



**LEGEND**

- AC PLAY AREA
- AC PARKING
- AC GRINDINGS
- CONCRETE
- BUILDING

Y:\Client\_Files\0005\0005-133\CAD\Engineering\Exhibits\Completed\_Schools\PAU-W LU MIDDLE SCHOOL.dwg 1/9/2019 3:42:49 PM Rina Kampy



SCALE: 1" = 100'

**LEGEND**

- AC PLAY AREA
- AC PARKING
- CONCRETE
- BUILDING

LOCATION: PAU-WA-LU MIDDLE SCHOOL  
 OWNER: DOUGLAS COUNTY SCHOOL DISTRICT  
 ADDRESS: 701 LONG VALLEY RD.GARDNERVILLE, NV

PAVEMENT TYPES

AC PLAY AREA: 41,880 SF

AC PARKING:

#1= 15,887 SF  
 #2= 13,388 SF  
 #3= 31,916 SF  
 #4= 38,334 SF

TOTAL= 99,525 SF

CONCRETE: 64,125 SF

PARKING SPACES

STANDARD: 107  
 ADA: 8

**DOUGLAS COUNTY SCHOOL DISTRICT**  
**PAVEMENT INVENTORY**  
 JANUARY 2019

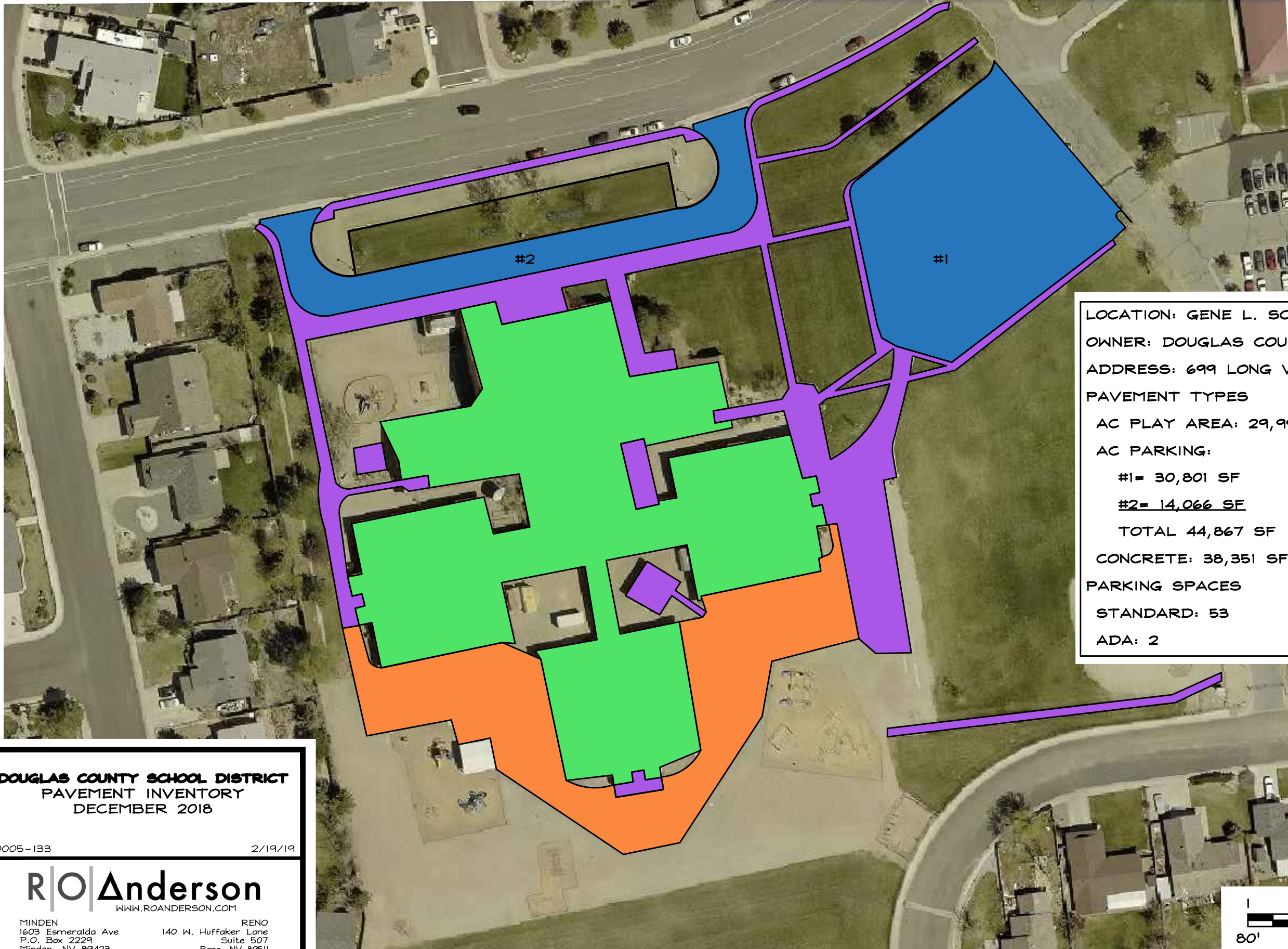
0005-133 1/9/19

**R|O|Anderson**  
 WWW.ROANDERSON.COM

MINDEN 1603 Esmeralda Ave  
 P.O. Box 2229  
 Minden, NV 89423  
 p 775.782.2322  
 f 775.782.7084

RENO 140 W. Huffaker Lane  
 Suite 507  
 Reno, NV 89511  
 p 775.782.2322  
 f 775.782.7084

Y:\Client\_Files\0005\0005-133\CAD\Engineering\Exhibits\Completed\_Schools\SCARSELL ELM.dwg 2/19/2019 9:48:01 AM Rina Kampy



SCALE: 1" = 80'

LOCATION: GENE L. SCARSELLI ELEMENTARY SCHOOL  
 OWNER: DOUGLAS COUNTY SCHOOL DISTRICT  
 ADDRESS: 699 LONG VALLEY RD. GARDNERVILLE, NV

PAVEMENT TYPES

AC PLAY AREA: 29,994 SF

AC PARKING:

#1= 30,801 SF

#2= 14,066 SF

TOTAL 44,867 SF

CONCRETE: 38,351 SF

PARKING SPACES

STANDARD: 53

ADA: 2

**LEGEND**

- AC PLAY AREA
- AC PARKING
- CONCRETE
- BUILDING



**DOUGLAS COUNTY SCHOOL DISTRICT**  
PAVEMENT INVENTORY  
DECEMBER 2018

0005-133 2/19/19

**R/O Anderson**  
WWW.ROANDERSON.COM

MINDEN 1603 Esmeralda Ave  
P.O. Box 2229  
Minden, NV 89423  
p 775.782.2322  
f 775.782.7084

RENO 140 W. Huffaker Lane  
Suite 507  
Reno, NV 89511  
p 775.782.2322  
f 775.782.7084

# Work Description

## CC Menely Elementary School

AC Play Area #2	27,412 SF	Crackfill	Type I Slurry
AC Play Area #2	3,600 SF(36x100)	Remove and Replace 3"AC	
AC Play Area #2	100 SF(10x10)	Remove and Replace 3"AC	
AC Play Area #2	100 SF(10x10)	Remove and Replace 3"AC	
AC Parking #2	17,814SF	Crackfill	Type I Slurry
AC Parking #3	12,773SF	Crackfill	Type II Slurry

## Pau-Wa-Lu Middle School

AC Parking #1	15,887SF	Crackfill	Type I Slurry
AC Parking #2	13,338SF	Crackfill	Type II Slurry
AC Parking #4	38,334SF	Crackfill	Type I Slurry

## Scarselli Elementary School

AC Parking #1	30,051SF	Crackfill	Type II Slurry
AC Parking #1	750 SF(15x50)	Remove and Replace 3"AC	

## Gardnerville Elementary School

AC Parking #1	18,228SF	Crackfill	Type II Slurry
AC Parking #2	10,165SF	Crackfill	Type II Slurry
AC Parking #3	26,912SF	Crackfill	Type I Slurry
AC Parking #4	18,106SF	Crackfill	Type II Slurry
AC Parking #4	1,600 SF(20x80)	Remove and Replace 3"AC	

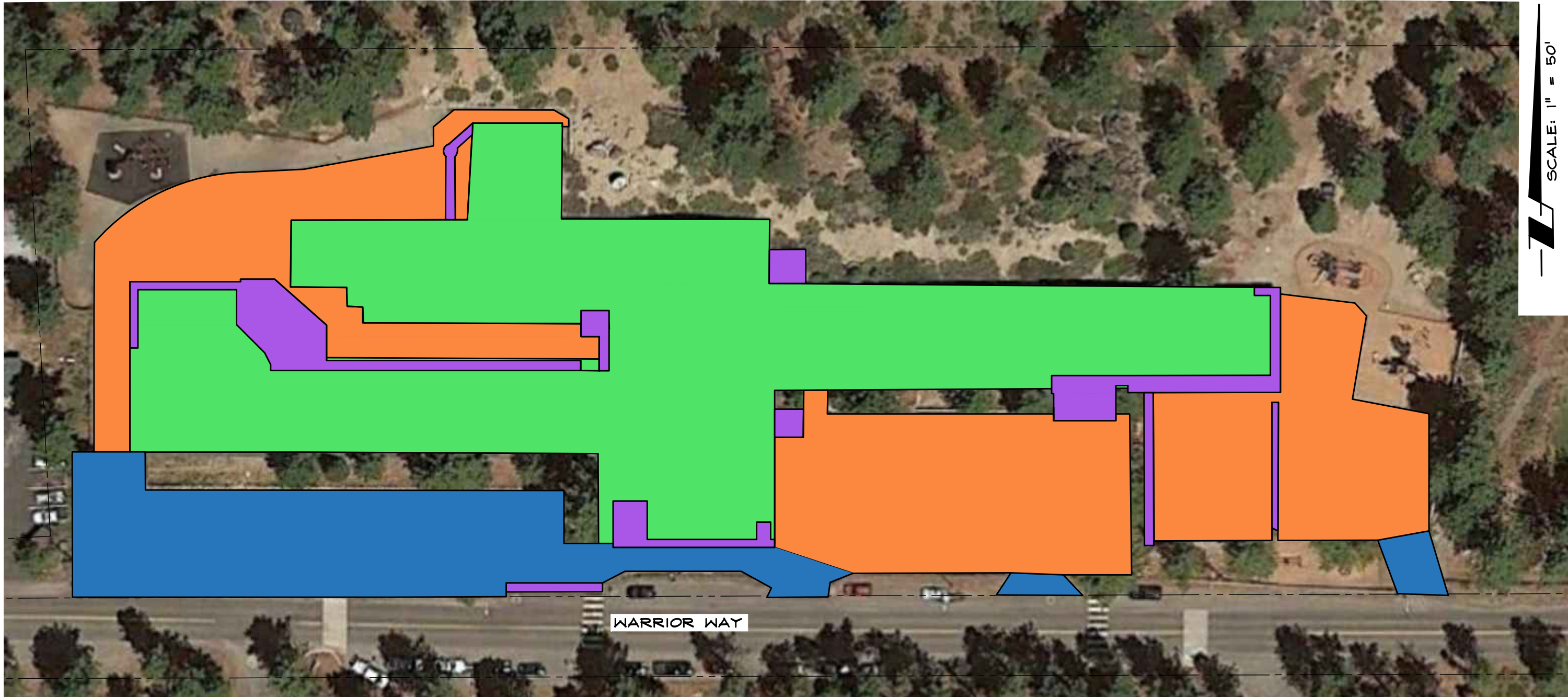
## Zephyr Cove Elementary School

AC Play Area	37,111SF	Crackfill	Type I Slurry
AC Parking	16,760SF	Crackfill	Type II Slurry

Re-paint all existing pavement markings and parking spots  
HMA shall be Type III 64-22 with lime

All work shall comply with Orange Book Standards

Y:\Client\_Files\0005\0005-133\CAD\Engineering\Exhibits\ZEPHYR COVE ELEM.dwg 12/20/2018 10:23:27 AM Leah Hoover



SCALE: 1" = 50'

WARRIOR WAY

**DOUGLAS COUNTY SCHOOL DISTRICT  
PAVEMENT INVENTORY  
NOVEMBER 2018**

11/29/18

**R|O|Anderson**  
WWW.ROANDERSON.COM

MINDEN  
1603 Esmeralda Ave  
P.O. Box 2229  
Minden, NV 89423  
p 775.782.2322  
f 775.782.7084

RENO  
140 W. Huffaker Lane  
Suite 507  
Reno, NV 89511  
p 775.782.2322  
f 775.782.7084



**LEGEND**

- AC PLAY AREA
- AC PARKING
- CONCRETE
- BUILDING

LOCATION: ZEPHYR COVE ELEMENTARY SCHOOL  
OWNER: DOUGLAS COUNTY SCHOOL DISTRICT  
ADDRESS: 226 WARRIOR WAY, ZEPHYR COVE, NV

**PAVEMENT TYPES**

AC PLAY AREA: 37,111 SF  
AC PARKING: 16,760 SF  
CONCRETE: 6,574 SF

**PARKING SPACES**

STANDARD: 31  
ADA: 2